

MERMENTAU RIVER HARBOR AND TERMINAL DISTRICT



LOCATION – One mile north of U.S. Hwy 90 and one mile east of the Village of Mermentau on the Mermentau River

ORGANIZATION – The Mermentau River Harbor and Terminal District was created by Act No. 196 of the 1976 regular session of the Louisiana Legislature. It is governed by board of commissioners consisting of 7 members who serve for a 5-year term. The Mermentau River Harbor and Terminal District is a political subdivision of the state of Louisiana, and its territorial limits extend to the limits of Ward 5 of Acadia Parish.

PORT COMMISSIONERS

Stephen Broussard	Darla Istre	Robert Dale Thibodeaux
Donlean Gary	Richard Myers	
Keith Henry	Karlon Thibodeaux	

PORT PRESIDENT

Stephen Broussard W 337/433-3632
P.O. Box 292 fax 337/436-3727
Estherwood, LA 70534 C 337/581-3369
E-mail stbroussard@la.gov

PRIMARY CARGOES

Inbound – Aggregates, fertilizer, rough rice and rice hull compost
Outbound – Grain (rice and soybeans)

OVERALL ANNUAL TONNAGE (2008) – 53,100.40 tons

REVENUES (2008)

Gross Operating Revenue	\$15,843.81
Tax and Other Revenues	\$47,093.24
TOTAL GROSS REVENUES	\$62,937.05

TOTAL EMPLOYEES – One part time bookkeeper

MAIN CHANNEL DEPTH – 9 foot draft

CRUISE TERMINALS & FACILITIES – N/A

CARGO TERMINALS & FACILITIES

Port Aggregates, Inc.

Leases 7.706 acres of water front property
Average annual tonnage 80,000 tons
Primary product is aggregates

Mid State Sand & Gravel, Co., Inc. dba Diamond B

Leases 10.7474 acres
Average annual tonnage 28,000 tons
Primary product is aggregates

Acadiana Export Service, Inc.

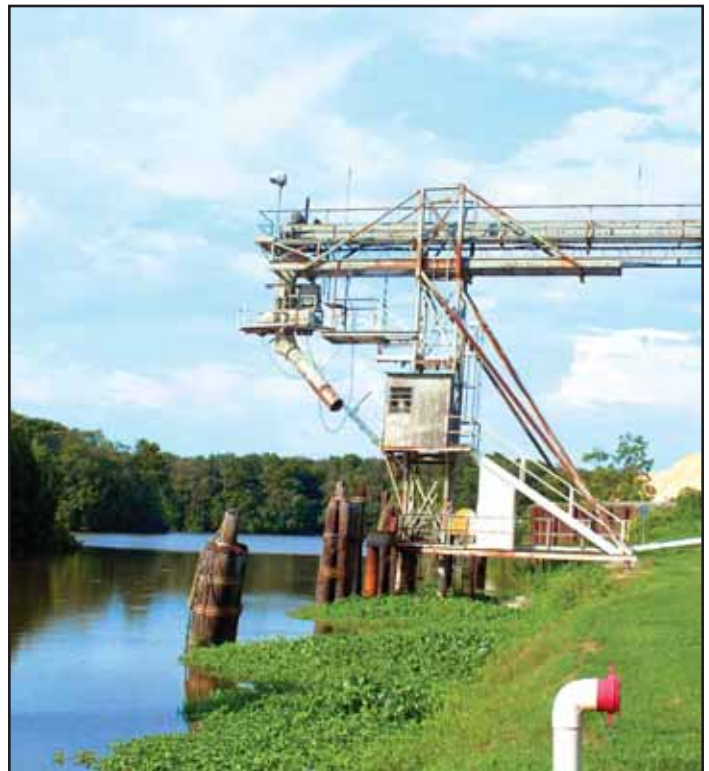
Leases 12.5563 acres
Average annual tonnage 1,000 tons
Primary product is rice hull compost

Bunge, Inc.

Owns approx. 10 acres adjacent to the port's slip
Average annual tonnage 11,000 tons
Primary products are soybeans, rough and clean rice.

OTHER PORT-OWNED BUSINESSES, SERVICES AND FACILITIES – Slip, service road and 12 acres of land

OTHER PORT AREA SERVICES – N/A



MERMENTAU RIVER HARBOR AND TERMINAL DISTRICT (PORT OF MERMENTAU)

P.O. Box 1305, Crowley LA 70527-1305 • Tel: 337/785-1000 Fax: 337/785-2000 • stbroussard@la.gov

MORGAN CITY HARBOR AND TERMINAL DISTRICT



LOCATION – The Port of Morgan City is located within the communities of Morgan City and Berwick in St. Mary Parish. The port is near the east bank of the Atchafalaya River in a natural wide and deep harbor known as Berwick Bay. With immediate access to the future U.S. I-49 corridor, it is just one hour away from New Orleans, Lafayette and Baton Rouge. Centrally located along the U.S. Gulf coast, the Port is only 29 miles from the U.S. Gulf of Mexico. The Port of Morgan City has been an avenue of both domestic and international trade since 1957. The Atchafalaya River, the U.S. Gulf

Intracoastal Waterway, and Bayous Boeuf, Black, and Chene are the connections to traffic throughout the continental United States and abroad. The Atchafalaya River has its beginnings at the junction of Old River and the Red River in east-central Louisiana. Old River is a short connection between the head of the Atchafalaya and the Mississippi River. The Atchafalaya flows southward a distance of 135 miles and empties into the Atchafalaya Bay.

Traffic between points in the southwest United States and the Upper Mississippi River Valley saves approximately 342 miles per round trip by using the Atchafalaya River and the Port Allen Alternate Route rather than the alternate link of the U.S. Gulf Intracoastal Waterway via the Harvey Locks at New Orleans.

ORGANIZATION – The Port of Morgan City was created by Act 530 of 1952. Since 1957, it has been active in both domestic and international trade. It is governed by a 9 member Board of Commissioners that are appointed by the Governor and serve for a 9-year term.

PORT COMMISSIONERS

Matt Ackel	Duane Lodrigue	Willie Tezeno
Gregory Aucoin	William New	Raymond Wade
Deborah Garber	William "Bill" Pecoraro	

PORT STAFF – Jerry Hoffpauir, Executive Director
Cindy Cutrera, Manager of Economic Development
Rebecca Concienne, Operations Assistant

PRIMARY CARGOS

Inbound – Steel, project cargo, offshore equipment, stone aggregate, drilling supplies

Outbound – Heavy lift project cargo, general cargo, rice and molasses, salt

OVERALL TONNAGE – 7,500,000 annual tons **REVENUES** – N/A

MAIN CHANNEL DEPTH – Minimum channel depth is authorized by Congress from Morgan City to the U.S. Gulf of Mexico and is 20 feet deep by 400 feet wide

CARGO TERMINALS & FACILITIES – Docking: Dock length: 800' with water frontage of 1250' on Bayou Boeuf near its intersection with the Atchafalaya River. The terminal is suitable to handle container, general and bulk cargo.

Intermodal transfer (on dock) Dockside mobile crane capable of lifting a fully loaded (70,000 lb.) 40 foot container. Three forklifts; 5,000lb. 8,000 lb. & 10,000 lbs. for warehouse and yard use. Container crane 50 tons with 130 foot boom. Thirty-five ton cherry picker. Forty-ton container handler.

Warehouse Storage – A 20,000 sq.ft. warehouse with rail access and truck docks.

Yard Storage – 3.75 acres of on-dock storage, about 16 acres of auxiliary yard storage is available.

Inland Transport – Port is serviced by the BNSF railroad and has highway access to future U.S. I-49 corridor.

OTHER PORT-OWNED BUSINESSES, SERVICES AND FACILITIES – N/A

OTHER PORT AREA SERVICES – U. S. Customs and Border Patrol and U. S. Coast Guard Aids to Navigation, Marine Safety, Vessel Traffic Service and Buoy Tender Units Offices are all located within the port region. Cenac Offshore, LLC, the Port's terminal operator, provides ties to Mexico and other international markets. The Port of Morgan City region serves as safe harbor for vessels during extreme weather events.



MORGAN CITY HARBOR AND TERMINAL DISTRICT (PORT OF MORGAN CITY)

800 Youngs Road, Morgan City LA 70381 • Tel: 985/384-0850 • Fax: 985/385-1931 • <http://www.portofmc.com>