

NEWS FROM THE DOCKS



ASSOCIATION OF LOUISIANA

Louisiana Ports Deliver

September 2007
Volume 8, No. 9

Message from the PAL Office

On July 25th the Ports Association of Louisiana (PAL) requested qualifications from firms interested in developing a Strategic Economic Development Plan for Louisiana Ports. In response to that request, qualifications were received from nine firms.

On the afternoon of August 15th, the PAL Executive Committee met, evaluated and scored all submittals. The following firms were selected to submit proposals:

Burk-Kleinpeter/Tamerica/Ocean Shipping Consultants
Hanson Professionals/Wink/DiMatter
River/Halcrow/Maritime Directions
The Shaw Group/Martin/Norbridge/etc.
Transystems/GEC/etc.

PAL wishes to express its appreciation to all who participated in this process. We hope to have an opportunity to work together in the future.

FEMA News

FEMA agrees to clear debris from more Louisiana waterways

According to New Orleans CityBusiness,... At the request of Louisiana officials, the Coast Guard will clear additional Louisiana waterways of storm debris, in an extension of a program that began after Hurricane Katrina, the Federal Emergency Management Agency said.

The Louisiana Recovery Authority requested FEMA clear more waterways after learning that

the Coast Guard had conducted a comprehensive marine debris removal program in Mississippi and Alabama, LRA Executive Director Andy Kopplin said. Kopplin made the request to Jim Stark, director of FEMA's Louisiana Transitional Recovery Office, in an Aug. 15 letter.

After Katrina, the Coast Guard cleared Louisiana's navigable waterways only, but other waterways remain clogged with debris, Kopplin said.

Stark said the Coast Guard has agreed to clear more waterways in Louisiana. "We're excited about that," Stark said. "We were never opposed to paying for all that debris removal."

FEMA did not clear more waterways for Louisiana initially because state officials did not want to pay a 10 percent match for the work, Stark said. Once Congress waived the 10 percent match, Louisiana officials began asking for more waterways to be cleared, such as Lake Calcasieu, he said.

The state will give FEMA a list of prioritized waterways for cleaning, Stark said. Lakes Catherine and Pontchartrain are among waterways in need of debris removal, he said.

Corporate Member News

Port of Lake Charles Seeking Director of Engineering, Maintenance, & Development

The Port of Lake Charles, Louisiana is recruiting a senior engineering and maintenance leader to plan, organize, direct and oversee its engineering, maintenance, and development

functions. The successful candidate will, under the general direction of the Executive Director, undertake major functional responsibility for engineering and architectural design, project specifications, bidding, and management, terminal layout planning, facility assessments, and the development and implementation of a life-cycle based asset management and maintenance program.

Working closely with other members of the Executive Team, the Director will be a Registered Professional Engineer with emphasis in the civil and mechanical fields. Demonstrated experience and success in program and construction management, supervision of technical and professional staff and consultants, and the design and delivery of asset maintenance programs will be key considerations in the selection process.

Forward your resume for this important and challenging senior management position by September 15, 2007 to: Port of Lake Charles, Attn.: Cynthia English, Human Resources Department, P.O. Box 3753, Lake Charles, LA 70602, or electronically to cenglish@portlc.com

Port of South Louisiana

The Port of South Louisiana hosted a reception to thank Louisiana Legislators and the U.S. Congressional Delegation for their support of the port at its Globalplex Guest House on August 21.

Present at the reception from the Louisiana Delegation were Rep. Roy Quezaire, Sen. Joel Chaisson, and Rep. Gary Smith; and from the U.S. Congressional Delegation were Rep. Charlie Fauchaux and staff person, Barney Arceneaux; Wes Kungel of Sen. Mary Landrieu's office; and Justin Crossie from Sen. David Vitter's office.

"This has been a really good year for the Port of South Louisiana and all ports of Louisiana in terms of funding for infrastructure projects, and we want to thank you all for your assistance," said Executive Director, Joel Chaisson. "We also want to especially thank Rep. Fauchaux and Rep. Quezaire who will finish their tenures at the end of this year, Chaisson added. "Rep. Quezaire's membership and chairmanship of the House Transportation Committee and Rep. Fauchaux's membership on the Ways and

Means Committee have been very beneficial to this port."

All members of the Louisiana Delegation and the Federal Congressional Delegation were presented with a commemorative world globe to signify their impact on the port.



From left to right: Joel T. Chaisson, Executive Director of the Port of South Louisiana; Congressman Charlie Melancon; and Louisiana Representative Gary Smith.

The Port of South Louisiana is anticipating receiving millions of dollars this year for several infrastructure projects from the Louisiana Port Priority Fund and Capital Outlay Bill to assist with ongoing development at the port. On the project list is the repair and reinforcement of the access bridge to the general cargo dock; construction of a 40,000 square foot transit shed; and construction of a finger pier at the general cargo dock.

These projects are all critical to the continued growth of the Port of South Louisiana, the largest tonnage port in the Western Hemisphere, Chaisson remarked.

Lake Providence Port

Bumper Corn Crop

(Taken from the American Press; Aug. 27,2007)

Record acreage has produced Louisiana's largest corn crop in history. And record yields have farmers scrambling to find storage any place they can until the crop can be shipped out by barge, rail and trucks.

"I've never seen anything like it," said David Lanclos, the LSU AgCenter's state grain specialist. "It's a binbusting crop." Raley Bros. LLC stuffed so much corn into its 1.6 million bushel storage house in Monticello last week

that it blew through a wall and spilled into the street. Last week was the busiest of a harvest season that will spill into September.

Trucks carrying corn to grain elevators and other commercial storage facilities were sometimes lined 10 or more deep. There were stories of truckers waiting as long as five hours to dump their loads.

One hundred barges, each with a 53,000-bushel capacity, have been wedged into the Lake Providence Port to help transport the crop. "You can walk across this harbor and never get your feet wet," said Wyly Gilfoil, the port's Executive Director. "They almost have to grease them to get by one another."

Gilfoil said the corn crop could help push the port's annual total tonnage to 1 million tons compared to the previous high of 850,000 tons. "That would give us big-boy status," he said.

The volume of corn is so great that even commercial companies like Raley Bros., which has the capacity to store 7 million bushels at its five northeastern Louisiana locations, are having to dump some of it on the ground as the elevators and houses overflow.

When corn prices almost doubled to more than \$4 per bushel last winter because of the demand for ethanol, Louisiana farmers responded by planting 750,000 acres of corn, up from 300,000 in 2006.

Farmers also began searching for innovative ways to store their corn until they could get it to market. "We're sticking corn in every nook and cranny we can find," said Morehouse Parish producer Macon Lafoe, who planted 1,400 acres of corn.

Lafoe was among the first northeastern Louisiana farmers to use long plastic bags to store his corn. He invested about \$50,000 in the equipment and 20 bags, each 200 feet long and 9 feet in diameter with a storage capacity of 7,500 bushels per bag.

John Cooper and his family invested about \$300,000 to build more traditional storage elevators on their Richland Parish farm that hold about 120,000 bushels. "It's absolutely paying off," Cooper said. "The No. 1 thing is to be able

to get your crop out of the fields, and this allows us to do it without waiting on the elevators."

World Trade Center

1ST HALF 2007 LOUISIANA EXPORTS INCREASE 21 PERCENT TO \$13.4 BILLION

Louisiana's worldwide merchandise exports, which set a record in 2006 after slowing in 2005 due to Hurricanes Katrina and Rita, topped \$13.4 billion in the first six months of 2007, an increase of 20.7 percent in value over the January-June 2006 period, according to a report issued today by the World Trade Center of New Orleans. The state's exports reached \$23.5 billion for all of 2006. Louisiana's export growth for the first six months of the year was almost double the overall U.S. rate of 10.6 percent.

Agricultural products, chemicals, petroleum and coal, processed foods, and industrial machinery continued to rank as Louisiana's top five export sectors in the first half of 2007, four of which registered double-digit percentage gains over the same period in 2006. The state's principal export markets were Japan, Mexico, China, Canada, and the Netherlands.

The WTC report was generated by the World Institute of Strategic Economic Research (WISER) from U.S. Census Bureau data. It covers the exports of both Louisiana originating products and some major commingled bulk commodities (especially grain and coal) produced in other states that are shipped abroad from Louisiana's ports and recorded as Louisiana exports because of the difficulty of identifying the actual states of origin.

The value of export shipments of agricultural products through Louisiana's lower Mississippi River ports – which account for over 50 percent of U.S. grain exports – was especially strong in the first six months of 2007, with \$5.5 billion, a 34.5 percent increase.

"The state's first half results, coming after last year's record-breaking export performance, is a good sign, with significant increases in dollar value in eight of the top ten categories," said Larry Collins, Director of International Services with Louisiana Economic Development. "The global economy is doing well and we expect to

see Louisiana's foreign trade keeping pace with it."

After agricultural products, Louisiana's largest exports during the January-June 2007 period were chemicals (\$2.5 billion, a 1.5 percent decrease), petroleum and coal products (\$2.3 billion, a 27 percent increase), processed foods (\$1.2 billion, a 13 percent increase), and industrial machinery (\$398.9 million, a 27.1 percent increase).

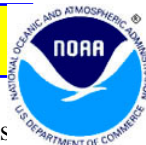
"Many of the state's exporters are showing across the board increases," said Donald van de Werken, Director of the New Orleans U.S. Export Assistance Center. "The demand worldwide for Louisiana goods and services continues, with the Central American markets offering special opportunities close to home because of the U.S./CAFTA free trade agreement."

Japan continued to be the number one market for Louisiana exports in the first half of 2007 with \$1.50 billion (a 31 percent increase over 2006), followed by Mexico (\$1.46 billion), China (\$1.05 billion), Canada (\$950 million), and the Netherlands (\$636 million).

"The opportunities have never been better for Louisiana companies in both exporting and importing," said Eugene Schreiber, Managing Director of the World Trade Center. "The state's export results in recent years, despite Hurricanes Katrina and Rita, speak for themselves, while the potential right now for importing related to rebuilding in housing, construction, home furnishings, environmental technology, and other needed goods and services is practically unlimited."

Among all of the states, Louisiana ranked 11th.

NOAA

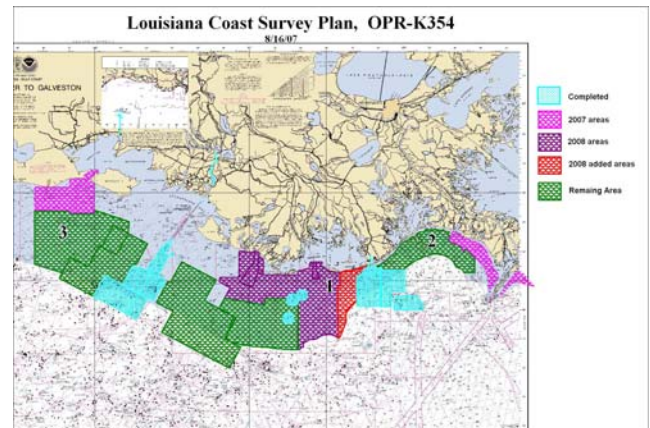


NOAA is developing a new set of surveys Louisiana for 2008 and beyond. These surveys are part of a program to deal with critical survey needs. These areas have not been surveyed in a very long time and have seen rapid changes in water bottoms, loss of shore areas, conversion to open water, etc.

The graphic shows, through color coding, the surveys that have been completed recently, ongoing surveys and future planned areas.

Note- These areas do not include any planned or proposed NOAA hazards survey areas. A second graphic showing these areas will be forthcoming. Areas like Calcasieu Lake, Lake Catherine, the middle grounds of Lake Pontchartrain, part of Vermilion Bay and West Cote Blanche Bay are included in the areas to be surveyed for hazards (and updating of the NOAA charts as well).

Please review and any comments or suggestions can be made by contacting the NOAA office at (337) 291-2111.



Welcome New Associate Member

PAL would like to welcome another new associate member this month: Innovative Strategic Advanced Systems, LLC (ISAS) is a software and security firm located in New Orleans. They will be represented by Ms. Cindy Hall.

MARK YOUR CALENDARS

September 11, 2007 - Millennium Port Authority - 10am - DOTD 3rd floor conf. Rm.
Sept. 30- Oct. 4th - 96th Annual AAPA Convention - Norfolk, VA
October 11, 2007 - PAL Monthly meeting
December 11, 2007 - Millennium Port Authority - 10am - DOTD 3rd floor conf. Rm.
March 12 -14, 2008 - PAL Annual Conference, El Dorado Hotel, Shreveport, LA

