

# NEWS FROM THE DOCKS



ASSOCIATION OF LOUISIANA

*Louisiana Ports Deliver*

August 2007  
Volume 8, No. 8

## Message from the PAL Office

PAL continues to move forward with our efforts to develop a Strategic Business Plan for Louisiana Ports. On Wednesday, July 25<sup>th</sup>, PAL sent out e-mail requests for qualifications to approximately 50 firms. Those who were interested had until August 8<sup>th</sup> to submit their responses to the questions presented in the RFQ. A total of nine submittals were made. Most of them identified teams that would work together to accomplish the task. PAL's executive committee will review all responses and narrow the field down to a handful they feel would best be able to tackle the task at hand. Those selected firms will be requested to submit proposals. PAL hopes to have a contract in place by the end of October.

This is an exciting effort for PAL and we look forward to working with those who choose to submit proposals. If you would like to have additional information about this process or have any questions that need to be answered, please call Dot McConnell at the PAL office (225/334-9040).

## Legislative Update

PAL was saddened and perplexed to see that Governor Kathleen Blanco elected to veto Senate Bill 146 by Sen. Reggie Dupre, D-Bourg, which would have created the Windfall Highway, Infrastructure and Protection Fund, or WHIP, using extra money generated by oil-and-gas revenues. Had the bill been signed, it would have brought approximately \$20 million to the Port Construction and Development Priority Program over the next two years. The majority of the funding provided by the proposed

legislation would have gone to highway infrastructure improvement.

In her veto message the Governor stated that her administration was already directing \$800 million for "critical infrastructure, hurricane protection and coastal restoration" this session. She also stated that she was concerned about dedicating money in such a way because it would decrease the state's fiscal flexibility and limit how it could respond to emergencies and needs in other areas, such as education and health care.

PAL cannot stress enough how important it is to secure an adequate, stable, secure and reoccurring funding source for port infrastructure. We will be back next session to try again.

.....  
*WRDA – Water Resources Development Act*

U.S. Rep. Richard Baker, R-Baton Rouge, who serves as ranking member of the Water Resources subcommittee, which has jurisdiction over the U.S. Army Corps of Engineers, was named as a House conferee to the committee that will work with the Senate on final language for the Water Resources and Development Act (WRDA), legislation that authorizes funding and work by the Corps. The bill includes many projects critical to Louisiana and the Baton Rouge area that were championed by Baker.

Highest at stake in the bill – if passed, the first WRDA legislation in seven years – for post-Katrina and Rita Louisiana, is authorization of over \$2 billion in funding and Corps work on numerous coastal restoration and hurricane protection projects in the Louisiana Coastal Area, as well as for hurricane and flood protection projects for the Atchafalaya Basin from Morganza to the Gulf.

Also, the bill includes language by Baker that would authorize the Corps for the first time to participate with other agencies to assess and seek solutions for the “hypoxia” problem or the “dead zone” in the Gulf of Mexico impacting Louisiana fishing, which recent reports indicate is growing worse. The provision would bring the Corps’ unique expertise in wetlands, specifically nutrient filters that mitigate against hypoxia, and waterways that deliver the nutrients, to bear on a unified plan to deal with hypoxia.

"There are so many initiatives in this bill that are important to Louisiana," said Baker. "I'm pleased to once again serve on the conference committee, and even more pleased to feel confidence that this long-sought legislation will finally gain final approval."

#### ***Late Update:***

With a threatened veto by the President the Congress adjourned for the August recess without the Senate talking action on the Bill.

### **DOTD News**

State Rep. Roy Quezairé has resigned his House seat to take a job with the DOTD.

Quezairé, who chaired the House Transportation Committee, is expected to be named to a legislative liaison position in the state Department of Transportation and Development.

A state representative since 1992, the 55-year-old Quezairé is in the final months of his term and cannot seek re-election under state law that limits the number of years a lawmaker can serve.

Roy Quezairé has been a good friend to ports in this state and we look forward to working with him in this new capacity.

### **Corporate Member News**

#### ***Port of Shreveport-Bossier***

Pratt Industries U.S.A. announced the company would build their third Waste Paper Recycling Mill at the Port of Shreveport-Bossier. The mill represents a \$150 million investment in the Shreveport-Bossier City community. Chairman

& CEO, Anthony Pratt made the announcement official with the signing of a Memorandum of Understanding at the company’s corporate office in Conyers, Ga. Mr. Pratt cited many reasons for the decision to come to The Port of Shreveport-Bossier, not the least of which was a “can do” attitude from all the Louisiana partners who worked with them on this project, coupled with a positive commitment to support the industry now and in the future.

Pratt’s third mill in the U.S. would be committed to using 100 percent post consumer fibers like its sister mills in New York City and Conyers, Ga. “This is paper and corrugated material that would otherwise have gone to landfill,” said Pratt, adding that landfills now contribute almost 3 percent of all greenhouse gas emissions released each year.

Together with its Australian parent, Pratt Industries is the world’s largest privately held paper and packaging company, whose slogan, “Harvesting the Urban Forest for Better Packaging Solutions” hints at the enormous economic and “green” impact the new recycling mill will have on the entire region of Northwest Louisiana. In effect, Shreveport will become the focal point of one of the largest recycling programs in the South.

According to Governor Kathleen Blanco, “I am proud to welcome the world’s largest privately held paper and packaging company, Pratt Industries, to Louisiana. This modern cost-effective Waste Paper Recycling Mill will allow Pratt to continue to grow on a path of excellence in terms of quality, service, and innovation. I am also pleased that this “green” investment will significantly enhance the conservation of our natural resources. Pratt’s strong stance on environmental protection makes them a great fit with Louisiana.”

“I am excited to bring to the citizens of Shreveport the environmental benefits of this historic partnership with Pratt Industries. It gives us national recognition as Pratt’s third recycling mill in the United States. Citizens might want to know that Pratt chose Shreveport over Dallas, Texas. Curbside recycling in Shreveport was once unimaginable, but with faith, we looked to the future and made it a campaign promise that I’m proud to say is now a reality. “Pratt brings the promise of jobs, a multi-million dollar payroll and opens a

tremendous window of opportunity for the Port of Shreveport-Bossier,” Shreveport’s Mayor, Cedric Glover said.

Globally, the Pratt Group has annual sales in excess of \$3 billion dollars, while, in the U.S., Pratt Industries is the seventh largest paper packaging group, with annual sales exceeding \$1 billion. The decision to select the Port of Shreveport-Bossier came after an extensive due diligence process involving several states.

The Official Ground Breaking Ceremony for Pratt Industries’ third U.S. Waste Paper Recycling Mill at the Port of Shreveport-Bossier is slated for Wednesday, August 15.

The new mill facility at the Port of Shreveport-Bossier will represent an investment of approximately \$150 million dollars and will produce product for Pratt’s own internal consumption. More than 150 permanent and full time jobs will be created at the mill, and payroll is expected to exceed \$6.3 million. Pratt’s investment is estimated to stimulate \$227.4 million in economic output during the construction period and an annual average of \$133.7 million during full operations. In addition, the anticipated income benefits derived from the facility are expected to reach \$90.5 million during construction and \$38.8 million annually when the facility is fully operational.

During the construction period, officials estimate that 1,695 new direct, indirect and induced jobs will be created. Upon full operations, an average of 593 direct, indirect and induced jobs will be created and maintained by the economic activity of the facility.

---

### **Port of Lake Charles**

#### ***Harbor Police and Calcasieu Parish Sheriff’s Department Receive Grant under 2005 Buffer Zone Protection Program***

The Lake Charles Harbor and Terminal District is pleased to announce that a grant submitted by the Harbor Police Department in concert with the Calcasieu Parish Sheriff’s Office (CPSO) was approved under the 2005 Buffer Zone Protection Program. The \$50,000 grant provided funds to acquire eleven two-way marine radios, nine night vision binoculars, four regular portable radios, four satellite phones, one FURUNO Net radar, and one scanner for detector for divers/hull scanning.

The CPSO requested and received approval for four two-way marine radios, four night vision binoculars, one FURUNO Net radar, and one scanner for detector for divers/hull scanning. The items were purchased by the Harbor Police under the 2005 Buffer Protection Plan and transferred to the CPSO after authorization from the Port of Lake Charles Board of Commissioners at its July board meeting to enter into a Cooperative Endeavor Agreement.



*(Pictured Standing from Left to Right: R. Adam McBride, Port Director for the Port of Lake Charles, Lt. Ron Johnson, Calcasieu Parish Sheriff’s Office Maritime Enforcement, and Major David Wagoner, Harbor Police Department. Seated from Left to Right: Davidson Darbonne, President of the Board of Commissioners for the Lake Charles Harbor and Terminal District and Nelson Robles, Homeland Security, signing the Cooperative Endeavor Agreement.)*

“The tools provided under the Buffer Protection Program will increase the ability of the Harbor Police and Sheriff’s Department to protect the assets of the Lake Charles Harbor and Terminal District and the community waterway,” said R. Adam McBride, Port Director. “Protecting and securing our port and waterway is essential to our homeland security.”

“One very important responsibility of the Calcasieu Parish Sheriff’s Office is homeland security, which includes protecting our port,” says Sheriff Tony Mancuso. “We are very pleased to receive money from this grant to purchase this specialized equipment which will enable us to provide more secure waterways.”

The Buffer Zone Protection Program is a grant program administered by the Governor’s Office of Homeland Security, Preparedness Division. Its purpose is to provide specifically identified assets to law enforcement agencies to enhance

the security of port's assets and waterways. The Harbor Police have responsibility for the protection of the landside assets and the CPSO provides assistance in protecting the assets from the waterside through their Marine Division.

---

### ***Port of New Orleans***

*Exhibit Celebrates New Orleans' Maritime History - Historic Navigation Charts, Photos Highlight Display*

The Port of New Orleans hosted an exhibit starting July 26 that celebrated the history of maritime commerce in New Orleans as well as the 200<sup>th</sup> anniversary of the National Oceanic & Atmospheric Administration (NOAA), the nation's oldest science agency.

Central to the exhibit is an engraved copper map plate that was created in 1862 that is on loan to the Port from NOAA for a period of five years. The plate was used to print navigational charts of the approaches to New Orleans from the Gulf of Mexico.



In recognition of the landmark 200th anniversary of the establishment of the Survey of the Coast, NOAA and the Smithsonian Institution Traveling Exhibition Service (SITES) have created the exhibit, "From Sea to Shining Sea: 200 Years of Charting America's Coasts." The Port of New Orleans is one of 200 venues nationwide where the exhibit will be seen this year.

Additionally, the exhibit features photographs from the Port of New Orleans archives of maritime activity in New Orleans from past and present called "A Legacy of Commerce: Images of the Port of New Orleans." The exhibit includes the work of Charles Franck, a renowned New Orleans photographer who

worked for the Port from 1900 to 1930. Those images of the Port's maritime history contrast with modern ship operations captured by the Port's current photographer, Donn Young.

"The Port of New Orleans and the entire Mississippi River corridor is a great example of ports working in unison to serve this nation and support its economy," said Jack Dunnigan, NOAA's Assistant Administrator for the agency's National Ocean Service.

Gary LaGrange, President and Chief Executive of the Port of New Orleans, praised NOAA's work. "The history of NOAA's charting and navigation mission is as historic as the Port of New Orleans," LaGrange said. "Having the exhibit here is significant in illustrating how we, as one of the world's great ports, have a huge impact on the nation's economy and its access to world markets."

"This year we are proud to be holding a year-long celebration of 200 years of science, service, and stewardship to the nation originating with the Survey of the Coast," said Captain Steven R. Barnum, director of NOAA's Office of Coast Survey, which is one of the four offices that continues to carry out the original agency's mission. "We are honored that our partnership with the Smithsonian Institution has produced this vibrant depiction of our history to help us commemorate this distinguished occasion."

The exhibit will be located in the lobby of the Port Administration Building at 1350 Port of New Orleans Place, directly behind the Ernest N. Morial Convention Center. It is free and available for viewing weekdays during normal business hours. The exhibit will open on July 26th during a short reception following the 10:30 a.m. meeting of the Board of Commissioners.

In 2007 NOAA, an agency of the U.S. Commerce Department, celebrates 200 years of science and service to the nation. From the establishment of the Survey of the Coast in 1807 by Thomas Jefferson to the formation of the Weather Bureau and the Bureau of Commercial Fisheries in the 1870's, much of America's scientific heritage is rooted in NOAA. NOAA is dedicated to enhancing economic security and national safety through the prediction and research of weather and climate-related events and information service delivery for

transportation, and by providing environmental stewardship of our nation's coastal and marine resources.

SITES has been sharing the wealth of Smithsonian collections and research programs with millions of people outside Washington, D.C., for more than 50 years. SITES connects Americans to their shared cultural heritage through a wide range of exhibitions about art, science and history, which are shown wherever people live, work and play.

The Port of New Orleans is a leading entry point for steel, rubber, forest products, non-ferrous metals and coffee entering the United States. The Port serves inland markets in the American heartland because it is connected to 14,500 miles of inland waterways via the Mississippi River and its tributaries. Connections to six class one railroads provide additional avenues for getting cargo to and from the Port.

.....  
*U.S. Customs And Border Protection Opens Temporary Office At Robin St. Wharf  
New Building Scheduled To Open First Quarter Of 2008*

The U.S. Customs and Border Protection office relocated temporarily to the Port of New Orleans' Robin Street Wharf as construction begins on the agency's new building on Coffee Drive.



The new Customs building, scheduled for completion during the first quarter of 2008, will be a state-of-the-art two-story structure with space for all seaport operations.

“We are confident the temporary move to Robin Street will minimize impact to the maritime trade community,” said Vernon Foret, Area Port Director for the U.S. Customs and Border Protection sector. “The move will be transparent and we are looking forward to our new facility on Coffee Drive.”

The temporary office, located at 1380 Port of New Orleans Place, opened July 16 in space previously occupied by the Delta Queen Steamboat Company. The office is operational for all services during the agency's regular business hours. However, the agency has new telephone and fax numbers for its temporary location.

.....  
*Carnival Cruise Lines, Port Agree To Contract Extension - Carnival Fantasy To Continue Year-Round Four- and Five-Day Sailings*

Carnival Cruise Lines and the Port of New Orleans announced a new two-year contract today retroactive to Oct. 2006, with the option to renew the deal for an additional two-year-period, which could keep the world's largest cruise line sailing regularly from the Crescent City through 2010.

“This shows Carnival's commitment to the rebuilding of New Orleans and their confidence in the return of the City's tourism industry,” said Gary LaGrange, president and CEO of the Port of New Orleans. “Carnival is a trusted partner with the Port in our combined efforts to continue to revive New Orleans' tourism industry.”

“We are thrilled to be continuing our valued partnership with New Orleans and to report that we are seeing some improvement in demand for our New Orleans cruises and a steady expansion of the geographic source markets for passengers,” said Vicki Freed, senior vice president of sales and marketing for Carnival Cruise Lines. “It indicates that interest is definitely building among consumers from well beyond the local area for cruises from New Orleans.”

Under the terms of the contract, the 2,056-passenger *Carnival Fantasy*, which replaced the *Carnival Sensation* in October of 2006, will make a minimum of 70 calls per year to the Port of New Orleans' new \$37 million Erato Street Cruise Terminal and Parking Garage. The ship sails four- and five-day cruises to the Western Caribbean year-round, with port calls in Cozumel and Costa Maya.



Carnival also plans to hold its quarterly meeting of national sales managers on Sept. 24 and 25 in New Orleans to highlight the city's rebounding tourism industry to its leading sales personnel. More than 100 of Carnival's sales managers will attend the event, which will be held at Hotel Monteleone in the French Quarter.

An economic impact study found the cruise industry contributes \$226 million annually to the regional economy and supports more than 2,800 jobs in Louisiana.

---

### ***Port Manchac***

Port Manchac will be featured in the upcoming movie titled "Jump Out Boys", starring actor/singer Kris Kristofferson. The suspense/thriller production was filmed in part on location at the forty (40) acre terminal that is operated by Associated Terminals.

The plot of the movie involves a team of police detectives (played by Kristofferson and co-star Ameer Baraka) chasing a group of escaped convicts. Several scenes of the film including the warehouse, waterfront, and car chase segments of the movie were filmed indoors and/or outdoors at the site.



Pictured from left to right: Carole Wright, Kris Kristofferson, and Phillip Wright (Associated Terminals General Manager at Port Manchac)

The production company, "Most Wanted Films", noted that the versatility of the warehouses and the general layout of the facility make it an ideal location for an industrial or maritime film setting. "The publicity that Port Manchac will receive from this production will most certainly draw interest from other movie studios for future projects", according to production assistant Deidre LaCasse.

The film crew also commended the South Tangipahoa Parish Port Commission for its approval to utilize the Port Manchac terminal as a site location for the production. Additional scenes for the film were shot in downtown Ponchatoula and Covington, Louisiana. The release date for the film is scheduled for the Spring of 2008.

---

### ***Grand Isle Port Commission***

The August issue of Southern Living features an article on barrier islands...how they form, why we need them, why they are sinking and what people are doing to protect them. That article features a full-page photograph of Wayne Keller, Director of the Grand Isle Port Commission with a class of students from Lafayette Middle School. They are planting black mangrove seedlings to keep Fifi Island from washing away.

---

### ***Port Fourchon***

The current issue of Fortune Magazine is running an article about Port Fourchon and "The Next Energy Crisis". To access the article please follow this link:

[http://money.cnn.com/2007/08/02/magazines/fortune/no\\_energycrisis.fortune/index.htm](http://money.cnn.com/2007/08/02/magazines/fortune/no_energycrisis.fortune/index.htm)



PHOTO: STANLEY GREENE

## ***Port of Morgan City***

### *Request for Expressions of Interest for Terminal Operator*

The Morgan City Harbor and Terminal District is requesting letters from interested parties to lease and operate its port facility located at 800 Youngs Road, Morgan City, Louisiana.

Interested parties will, in addition to providing revenue to the District, create employment and enhance economic development within the region.

Interested parties should submit their letter expressing interest no later than 5pm CST on Friday, September 28, 2007 and include the following information:

Business name - Contact person -Address, telephone, fax and email address - Website address (if available)

All letters of interest should be either emailed to [jerry@portofmc.com](mailto:jerry@portofmc.com) or addressed and delivered to:

Port of Morgan City  
Attn: Jerry Hoffpauir  
PO Box 1460  
Morgan City, LA 70380

### About the District

The Morgan City Harbor and Terminal District, a political subdivision of the State of Louisiana, was created to promote economic development within its boundaries. The port facility is an approximately 25 acre USDA approved facility—equipped to handle shipping needs related to bulk, break-bulk, project and container cargoes.

### Port Facilities:

- Docking Capacity: 800 foot reinforced dock along Intracoastal Waterway
- Warehouse Facility: 20,000 sq. ft. warehouse with security and sprinkler systems; USDA approved for handling Titles II and III food commodities
- Cargo Storage: large storage area and marshalling yard for containers, forest products, coated pipe, structural steel, machinery
- Rail Spur: a Burlington-Northern rail spur which connects to the warehouse gives easy access to the U.S. and Union Pacific rail system

- Highway Access: immediate access to the future corridor Interstate 49, presently U.S. Highway 90; facility is approximately one hour from the cities of Baton Rouge, New Orleans and Lafayette, LA
- Location: located at the confluence of the Intracoastal Canal and the Atchafalaya River
- Waterways Access: the Gulf of Mexico is approximately 25 miles south via the Atchafalaya River; East and West points via the Intracoastal Canal; North points via the Atchafalaya River into the Mississippi River at Baton Rouge
- Airport: the facility is located 11 miles from the Harry P. Williams Memorial Airport in Patterson, LA

For more information, visit [www.portofmc.com](http://www.portofmc.com).

## **Legal News**



### **SPOILIATION OF EVIDENCE - UPDATE**

For years, the courts in Louisiana have recognized in matters involving civil litigation the concept of “spoliation of evidence.” Spoliation is the destruction or significant alteration of evidence or the failure to preserve property for another’s use as evidence in pending or future litigation. This evidentiary doctrine refers to the intentional destruction of evidence for the purpose of depriving an opposing party of its use. If spoliation is proved, it raises an adverse presumption against the party that destroyed or disposed of the evidence that the evidence would be detrimental to his cause.

An exception to this doctrine may exist when a suit has not been filed and there is no evidence that the party knew litigation would ensue when he discarded the evidence. It may also not apply if the party accused of destroying or not producing the evidence comes forth with a reasonable and adequate explanation.

If not adequately explained, the aggrieved party

may be entitled to a jury instruction for the presumption that the destroyed evidence contained information detrimental to the party who destroyed the evidence.

Prior to 1997, the only remedy Louisiana courts had granted for spoliation of evidence claims has been the application of the above-mentioned adverse presumption. Recently, several Louisiana jurisdictions may have set the stage to recognize spoliation of evidence as a distinct and separate tort. In *Pham v. Contico International, Inc.*, 759 So.2d 880 (La. App. 5<sup>th</sup> Cir. 2000), the issue to be decided was “does a worker’s compensation claimant have a cause of action in tort against his employer for spoliation of evidence to be used against a third party in a tort suit.” The employer claimed it was immune from tort suit by virtue of the act.

While the court dismissed the tort suit for spoliation of evidence against the employer it did not do so on the grounds of tort immunity. The court recognized that the employer could be sued in tort for destroying evidence but, because the employee’s suit did not claim that the evidence had been intentionally destroyed, the petition did not meet certain threshold requirements. *Carter v. Exide*, 661 So.2d 698 (La. App. 2<sup>nd</sup> Cir. 1995), and *Bethea v. Modern Biomedical Services, Inc.*, 704 So.2d 1227 (La. App. 3<sup>rd</sup> Cir. 1997). These courts all recognized that a well plead petition stating a proper claim for spoliation can stand and that the employer cannot shield itself from tort immunity provided in the state Worker’s Compensation Act.

This issue has been the focus of litigation in courts of other states where the courts have consistently held that the employer’s statutory immunity from tort liability to its employee for a work-related physical injury does not, of itself, shield the employer from a claim for economic injury that the employee may suffer as a result of the employer’s post-accident conduct, whether intentional or negligent, that may impair the employee’s ability to recover tort damages for his injuries from third parties. A good discussion of this emerging tort is found in *Catoire v. Caprock Telecommunications Corp.*, 2003 WL 21223258 (E.D. La. 2003).

Judges, however, can exercise their discretion and, if it is determined that evidence was in bad faith, destroyed or disposed of, impose sanctions on the offender. The Court may admonish and

advise the jury that the evidence destroyed would have been unfavorable to the party that destroyed the evidence. The Court may also impose monetary sanctions. Factors the Court may consider in determining the size of the penalty are culpability of the offender, prejudice to the other party, and degree of interference with the judicial process. Further, the Court has the power to hold in contempt and to sanction and discipline an attorney who might engage in such practice. The Court may also choose to bar the offending party from introducing evidence and/or the testimony of both lay and expert witnesses. This can have a very detrimental effect on the offending party’s ability to make its case.

Generally, the duty to preserve evidence begins when a party is on notice that the evidence may be needed in court. Once suit is filed, evidence must be presumed or run the risk of sanctions or penalties. This is also true prior to actual filing of litigation. If litigation is reasonable foreseeable, the prudent course is to preserve all that evidence which could foreseeably be of relevance.

The lesson to be learned is that, if an employee is injured due to an alleged defective product or in another instance where a third party may be responsible, the employer should take all reasonable precautions to preserve the evidence. To so do enhances possible recovery of compensation and medical expenses from that third party and will protect you, the employer, from the possibility of being sued in tort by your employee on the grounds that you have deprived him of his third party recovery.



**BY WILTON E. BLAND, PARTNER  
MOULEDOUX, BLAND, LEGRAND &  
BRACKETT.  
504-595-3000 OR WWW.MBLB.COM**

## In Memoriam

PAL is saddened by the loss of John Massey of BYL International, a long time associate member.

John Y. Massey Jr., 61, of Galveston, passed away Wednesday, July 18, 2007, at John Sealy Hospital in Galveston. John was born in Kansas City, Kansas, on December 31, 1945, and grew up in Kansas City and Milwaukee. He completed high school at Cauldey Grange Grammar School in England, where his family lived while his father served as president of Del Monte Foods International in London.



Upon his return to the United States, John entered Rockhurst University in Kansas City, then enlisted in the United States Air Force in 1966. After completing Air Force assignments in San Antonio, England and Labrador, John resumed his college education and earned his bachelor's degree in biology at the University of Wisconsin at LaCrosse. John began his business career in Kansas City, and moved to Galveston with his young family in 1978. John served in a variety of executive positions during a career of nearly a decade with the Port of Galveston. He was Assistant General Manager of the Port when he left to establish his own consulting firm in 1987, specializing in port master plans and the creation and operation of foreign trade zones.

John was a gentleman with great knowledge and ability to help us in the port industry. PAL will miss him.

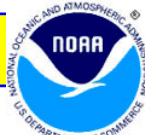
## America's WETLANDS News

*Ryan Finn Ocean Racing wins both legs of Bermuda 1-2, 2007*

Ryan Finn of New Orleans battled the winds and waves of the Atlantic Ocean in an effort to raise awareness about Louisiana's coastal land loss and its importance as the state's first line of defense against hurricanes.

On June 27, Finn won the Bermuda 1-2 ocean sail. In the first single-handed leg of the race, he dominated the field in the final two days, setting a record time of 86 hours and 31 minutes or a little over three and a half days. On the double-handed return leg, which started June 22, Ryan and co-skipper, Clark Thompson, were swept off course and staged a come-from-behind finish to win by a mere one hour and six minutes over their nearest competitor. The America's WETLAND Campaign congratulates Ryan on his victory.

## NOAA

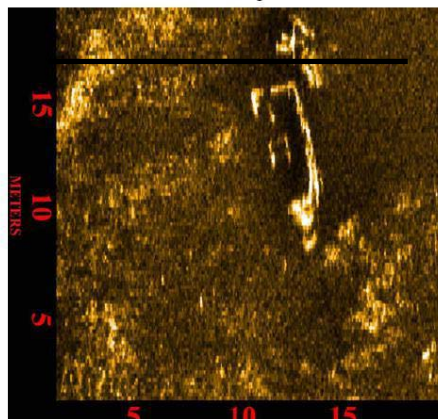


NOAA's hazards survey team working in south Plaquemines Parish has surveyed the Empire Channel leading from the harbor and out to the west.

Hydro Feature Report

1-DT616

Feature Images



The preliminary work found eleven (11) hazards that likely are dangers to navigation from the survey of the channel. The survey data is being confirmed and we will provide you with a full listing of the location of each hazard, the depth of water over the object, how far off the bottom the object is resting, and a image of the hazard (as well as general dimensions of each object).

Caution in transiting through this area should be taken.

## Welcome New Associate Member

PAL would like to welcome another new associate member this month: The Embassy

Suites Hotel of Baton Rouge has joined. They will be represented by Ms. Kelli Bourgeois.

### MARK YOUR CALENDARS

*August 2, 2007 - PAL Monthly Meeting, 10AM, Richmond Suites, Baton Rouge*  
*August 30, 2007 - PAL Monthly Meeting, 10AM, Port Fourchon*  
*September 11, 2007 - Millennium Port Authority - 10am - DOTD 3<sup>rd</sup> floor conf. Rm.*  
*Sept. 30- Oct. 4<sup>th</sup> - 96<sup>th</sup> Annual AAPA Convention - Norfolk, VA*  
*October 11, 2007 - PAL Monthly meeting*  
*December 11, 2007 - Millennium Port Authority - 10am - DOTD 3<sup>rd</sup> floor conf. Rm.*  
*March 12 -14, 2008 - PAL Annual Conference, Eldorado Hotel, Shreveport, LA*

